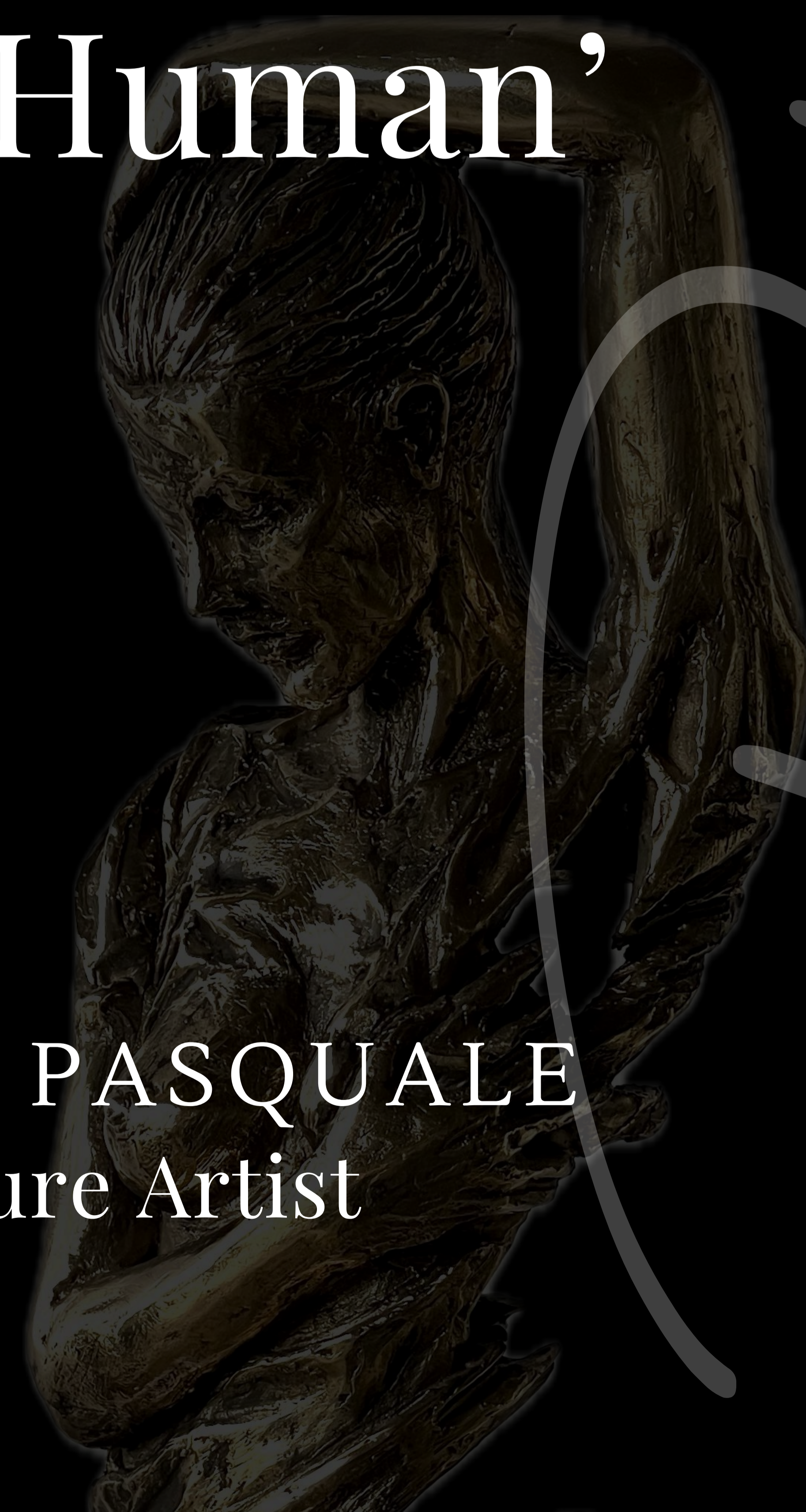


2024

# 'Sculptures about Being Human'

SILVIA DI PASQUALE  
Sculpture Artist



*Portfolio*

[www.silviadipasquale.com](http://www.silviadipasquale.com)

# PORTFOLIO

## Table of contents:

I. Concept

II. Sculpture series

1. Unveiling

2. Deep Into

3. Human Fragments

III. Bio

IV. Social and contacts

*Silvia Di Pasquale*

SILVIA DI PASQUALE - 2024

## I. Concept

My sculptures delve into the profound connection between the sculpted figure and the raw material from which it is born. They portray figures in an active pursuit of self-discovery, fearlessly venturing into the depths of their own physicality.

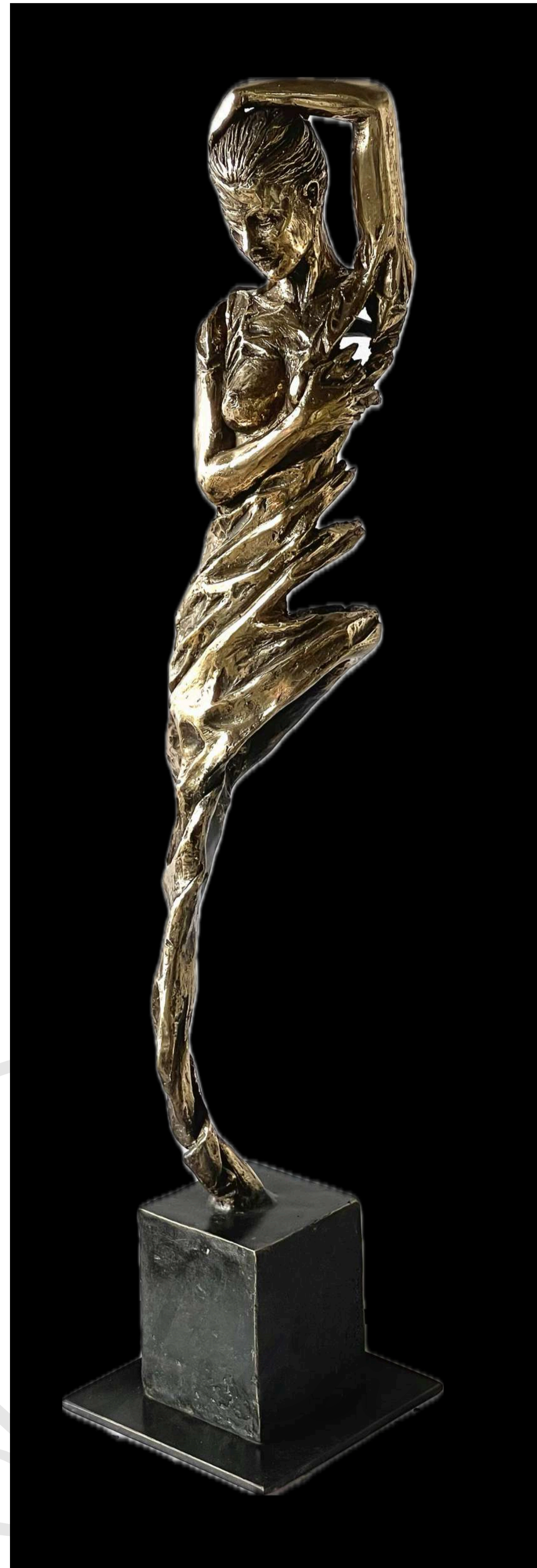
Presented here is a curated selection of three primary series of artwork: "Deep Into," "Unveiling," and "Human Fragments".

*'Sculptures about being Human'*, wherever this search might lead.

*Silvia Di Pasquale*

SILVIA DI PASQUALE - 2024

## II. Sculpture series Unveiling



**Nothing more to hide**

2024, Bronze, h 50 cm



**Giovane Velata**

2020, Bronze  
and black  
granite. H46 x 21  
x 18 cm.

What if tissues, surfaces, and anatomical elements became intricately interwoven, blurring the distinction between the boundary of flesh and the inception of matter?

SILVIA DI PASQUALE - 2024

# Nothing more to hide

2024

Front and back view



# Nothing more to hide

2024

Details



# Giovane Velata

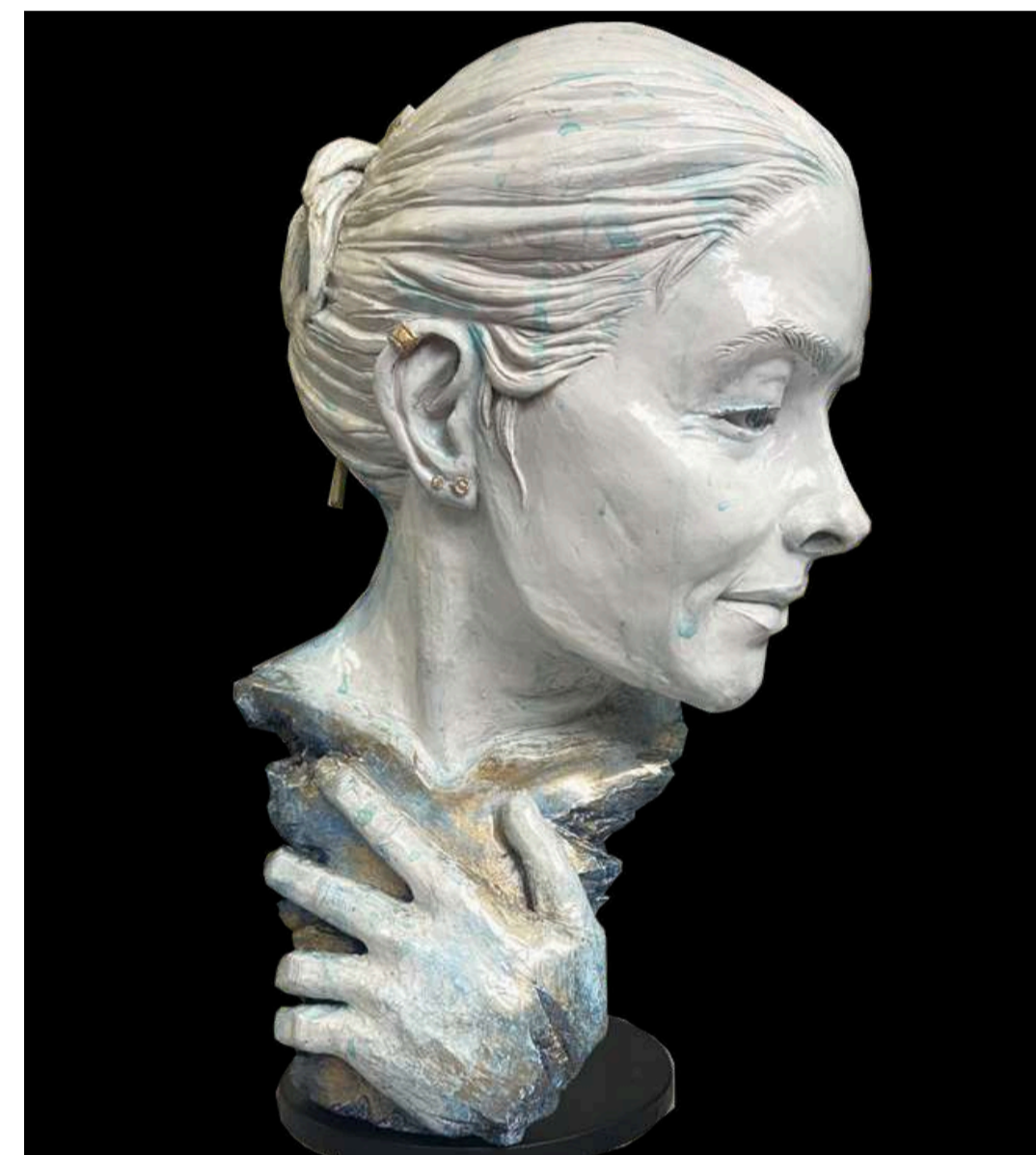
2020

Front and back view



## II. Sculpture series Deep Into

The 'Deep Into' sculpture series revolves around the notion of figures delving into their own physical forms. They embark on this journey driven with curiosity, perhaps in response to a challenge, or merely to authentically explore the depths of their own material existence. These sculptures portray humans embracing the raw truth that lies within, without any self-deception.



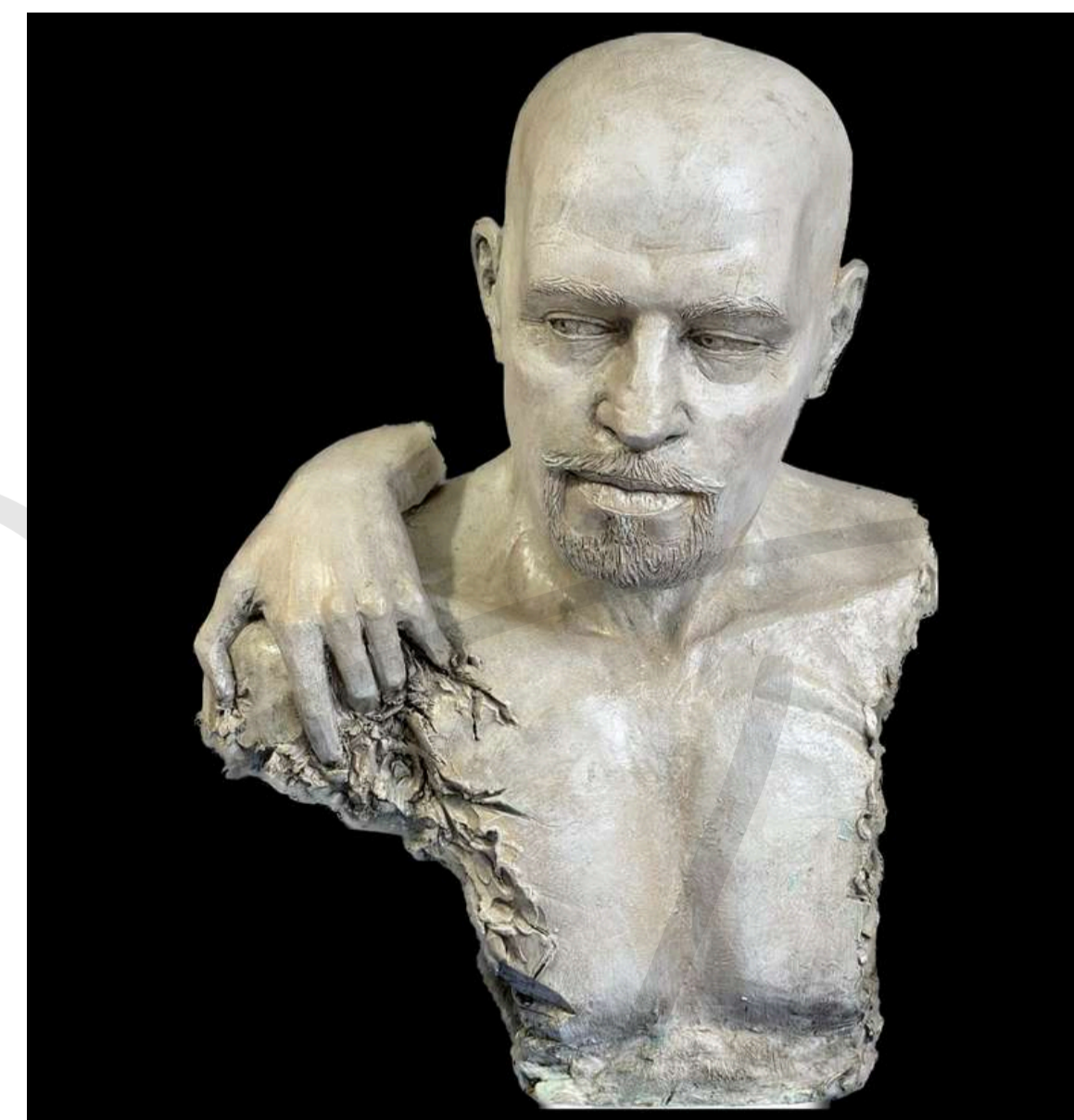
**The Gentle Search**

2024, Terracotta and mineral pigments patina.  
H 37 cm.



**Leaving the past behind**

2023, Terracotta and mineral pigments patina.  
Diameter 50 cm.



**Stay**

2023, Terracotta and mineral pigments patina.  
H47 x 34 x 23 cm.



**The Discovery**

2023, Terracotta and mineral pigments patina.  
H38 x 32 x 30 cm.

[www.silviadipasquale.com](http://www.silviadipasquale.com)

SILVIA DI PASQUALE - 2024





# The Gentle Search

2024

'Deep Into' Series

Front view



# The Gentle Search

2024

'Deep Into' Series

Back and face  
details



# The Gentle Search

2024

'Deep Into' Series

Side view

# Leaving the past behind

2023

'Deep Into' Series

Front view



Stay

2023

'Deep Into' Series

Front view

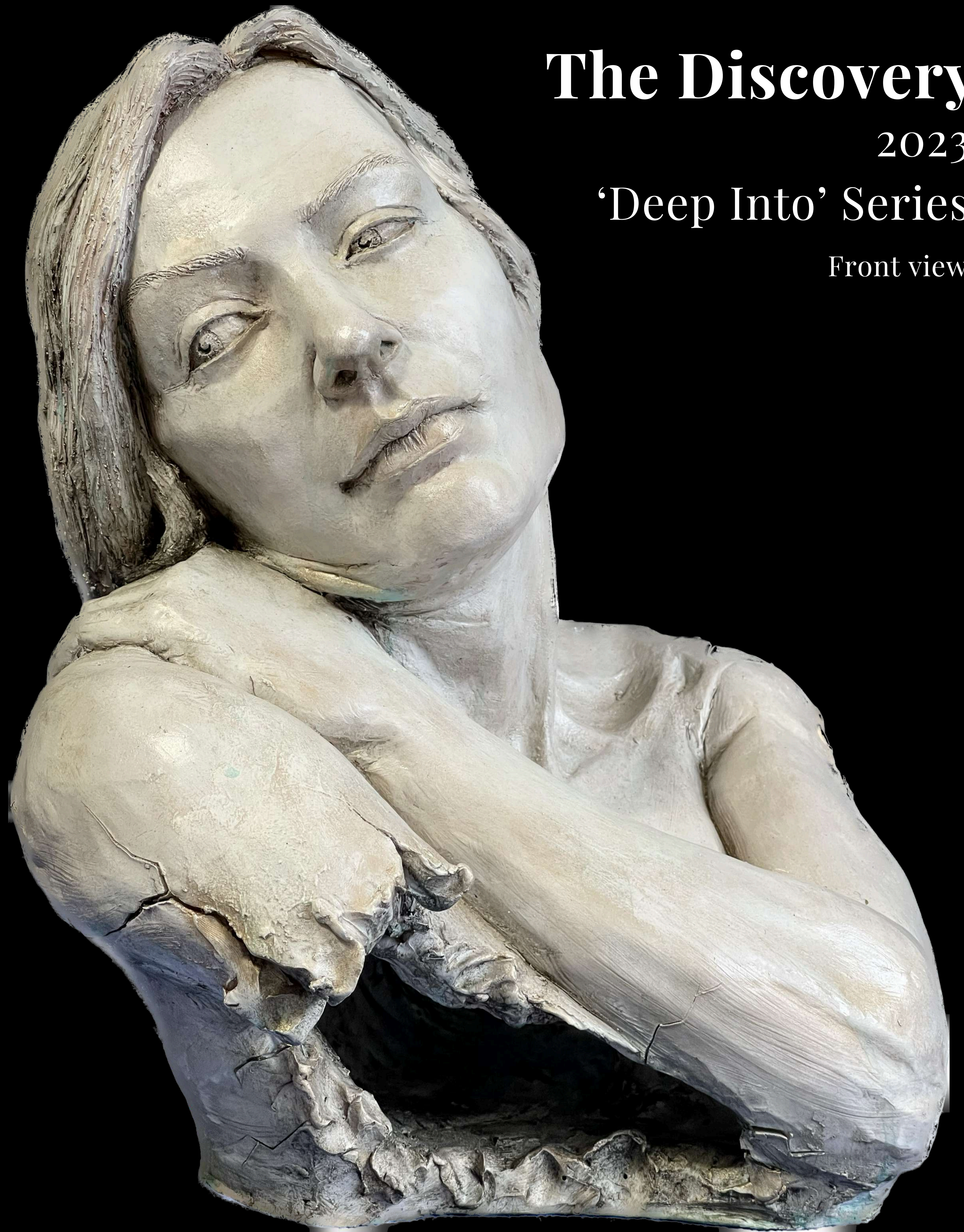


# The Discovery

2023

'Deep Into' Series

Front view

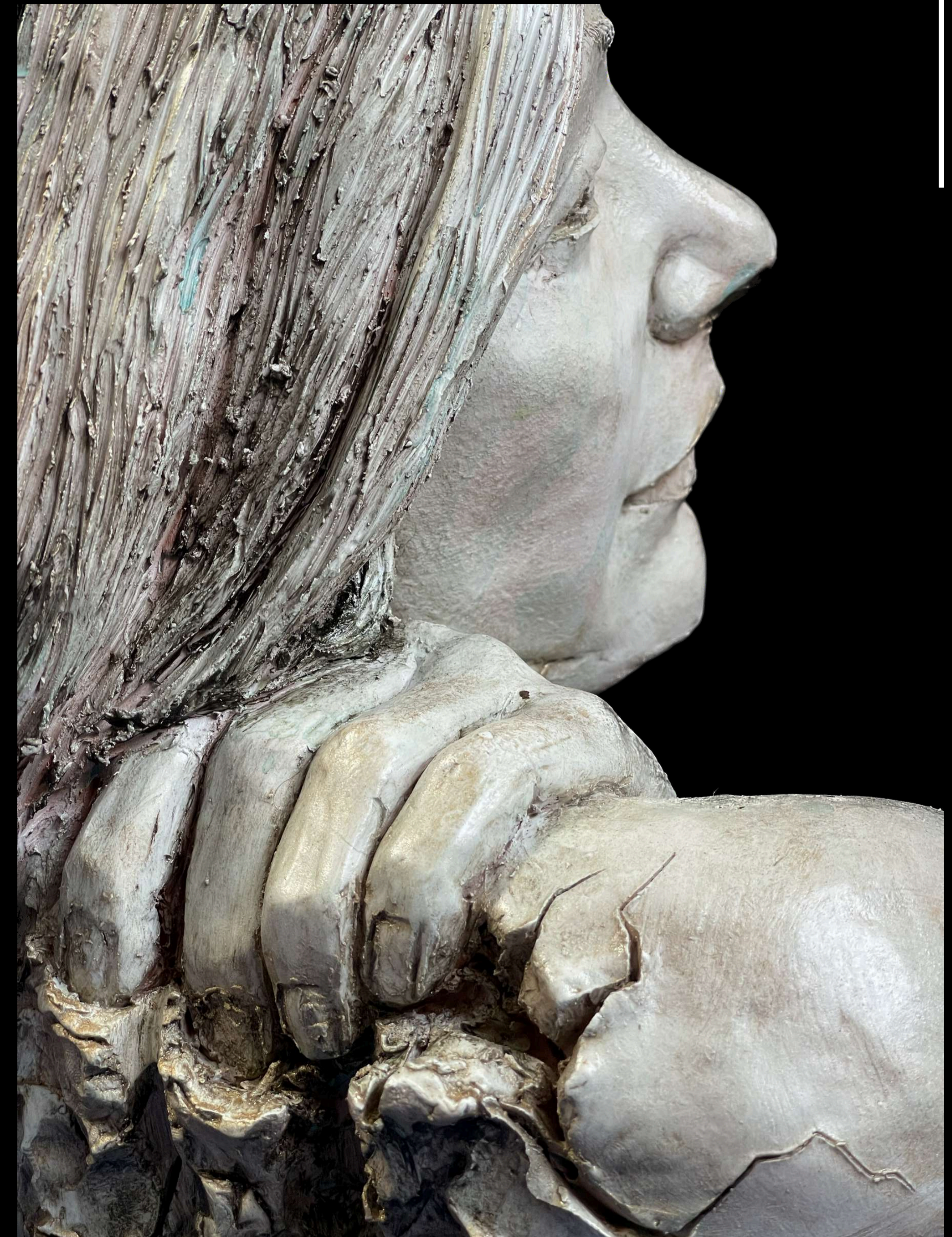


# The Discovery

2023

'Deep Into' Series

Details



## II. Sculpture series Human Fragments

Purely and simply exploring human body anatomies and facial expressions, in fragments.



### Mouths and eyes

2020-2024,  
Terracotta and  
mineral  
pigments patina.  
H8 to 10 cm +  
pedestal.

*Silvia Di Pasquale*

SILVIA DI PASQUALE - 2024



# Mouths

2020-2024

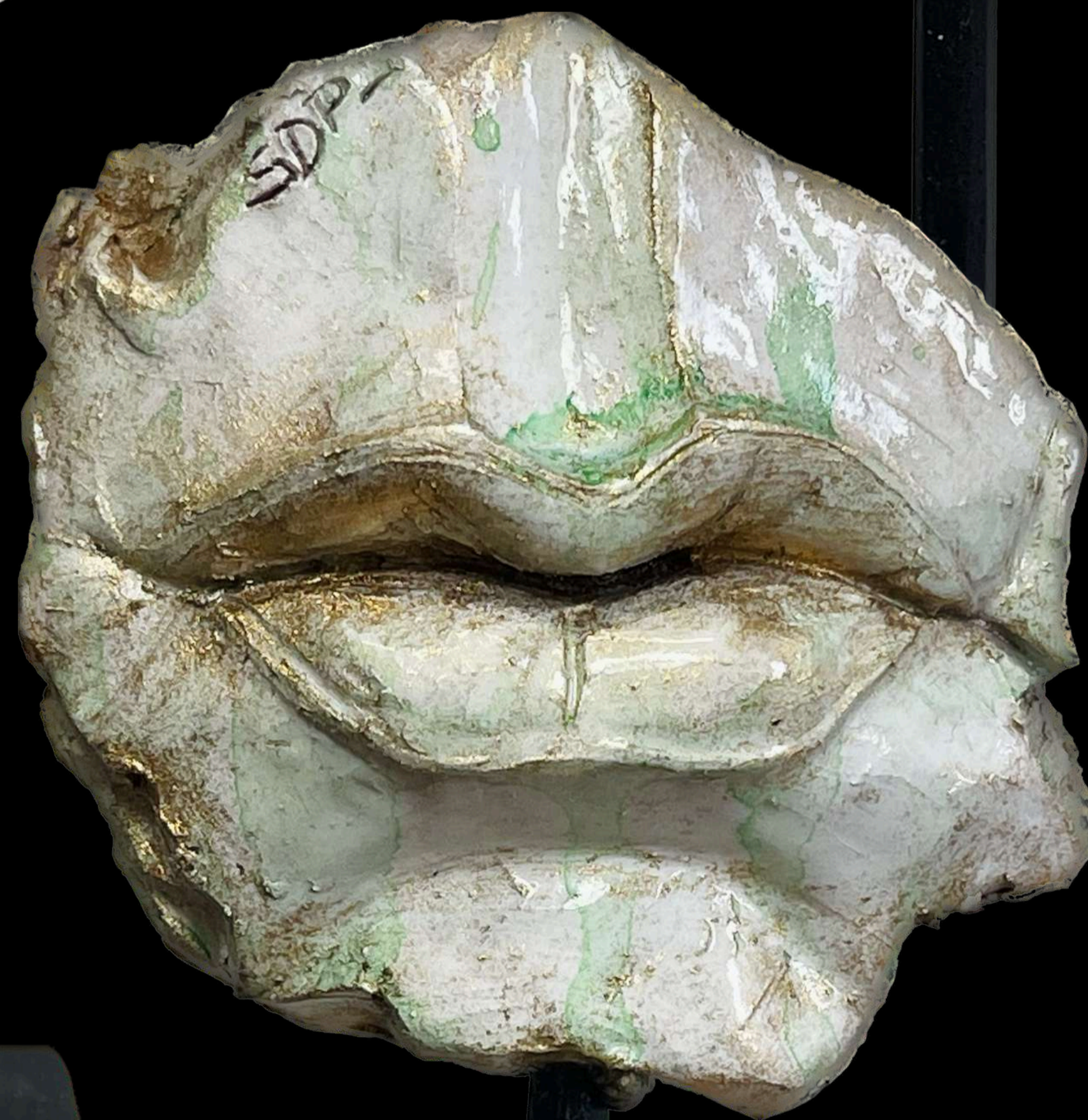
'Human fragments' Series



# Mouths

2020-2024

'Human fragments' Series



## III. Bio



I was born in Sicily in 1986, where my journey as a sculptor commenced. My artistic pursuit began with the study of Art and Sculpture, setting the foundation for my future endeavors. In 2004, I relocated to Tuscany, where I embarked on an academic journey culminating in a master's degree in Art History, achieved in 2011. Following my academic accomplishments, I launched my professional career as a junior **Sculpture Artist**, collaborating with agencies throughout Italy.

Soon thereafter, I ventured into the world of 3D digital sculpture, further enriching my artistic repertoire. From 2013 to 2017, I held the role of a **Digital Artist** and **3D Character Designer**, contributing to various 3D printing and virtual reality companies situated in northern Italy.

In 2018, I established my own Sculpture Atelier near Como, operating as a freelance sculptor proficient in both manual and digital sculpting techniques. My primary collaborative partnership finds its locus in **Perseo Artfoundry**, located in Mendrisio, Switzerland, where I engage in the meticulous modeling of figures for a diverse array of international artists. In tandem with my sculpting practice, I've assumed the role of an educator, sharing my expertise in figurative sculpture with aspiring artists. In 2019, I had my inaugural solo exhibition in Turin, Italy, titled "**Una crepa sul viso**", featured component of the "Premio letterario Enrico Furlini" event, which transpired on November 16th, 2019.

More recently, in 2022 and 2023, I had the privilege of collaborating with the distinguished artist Alexander Klingspor, contributing my talents as a 3D sculptor during various phases of the creation of the monumental masterpiece known as "NYC-legend." This awe-inspiring sculpture was ceremoniously installed in Union Square, New York City, on October 17th, 2023, and it will remain on exhibition until June 2024 (3d view [here](#) and full description of my work [here](#)).

### Partnership



**Perseo Artfoundry**

Via Vignalunga 15

6850 MENDRISIO - CH - Switzerland

info@perseoswiss.ch

www.silviadipasquale.com

SILVIA DI PASQUALE - 2024

## Contacts

*Silvia Di Pasquale*

[www.silviadipasquale.com](http://www.silviadipasquale.com) - [info@silviadipasquale.com](mailto:info@silviadipasquale.com)

*Mobile:* 0039 3286839057

*Atelier Address:*

Via Pierino da Cagno 16,  
22043 - Solbiate con Cagno,  
Como (CO) Italy

P.IVA: 03946840133

---

 [sculptress\\_silvia\\_dp](https://www.tiktok.com/@sculptress_silvia_dp)

 [silvia\\_di\\_pasquale](https://www.instagram.com/silvia_di_pasquale)

 [silvia.antonio.dipasquale](https://www.facebook.com/silvia.antonio.dipasquale)